



Elevation B

LibertyHomesVA.com

The Hill

Renderings and Plans are for marketing purposes only and may be shown with additional options including siding. This information is deemed accurate, but cannot be guaranteed. Consult Sales Contract and Option Schedule for actual options chosen. Builder reserves the right to make changes at any time.

The Hill Optional Elevations



Elevation A



Elevation C



Elevation D

*ADDITIONAL ELEVATIONS SHOWN
W/ SHAKE, BOARD AND BATTEN,
PVC WINDOW TRIM, AND/OR
ARCHITECTURAL GABLE ACCENTS*



Elevation A



Elevation C



Elevation D



Elevation B

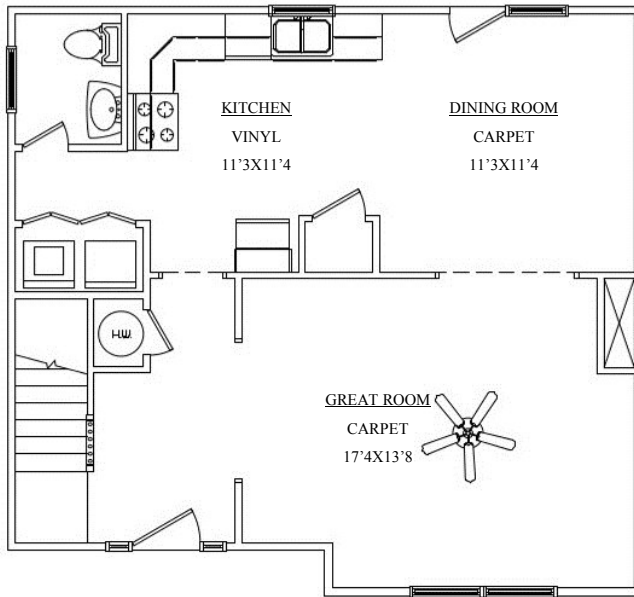


Elevation A

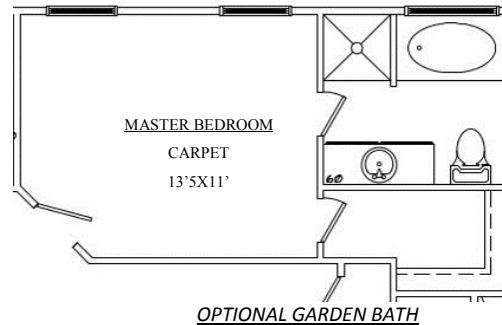
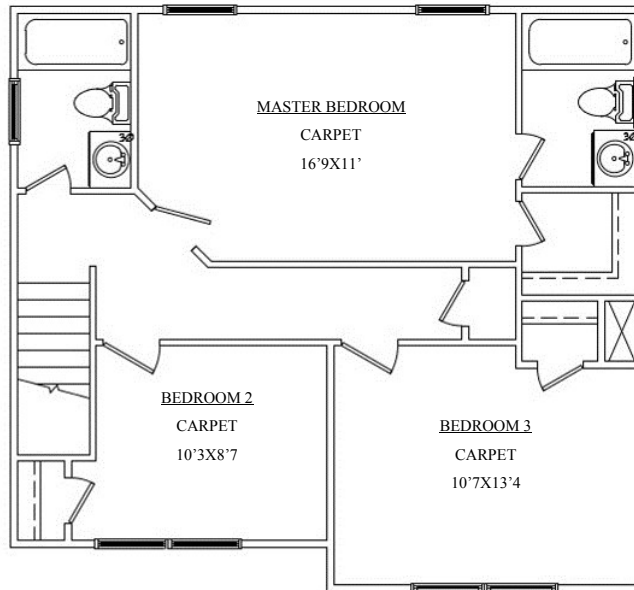
Renderings and Plans are for marketing purposes only and may be shown with additional options including siding. This information is deemed accurate, but cannot be guaranteed. Consult Sales Contract and Option Schedule for actual options chosen. Builder reserves the right to make changes at any time.

The Hill Floor Plan

First Floor



Second Floor



Liberty Homes, Inc.
8249 Crown Colony Parkway
Mechanicsville, VA 23116

Phone: (804) 730-7770
LibertyHomesVA.com



1400 Finished Square Feet
3BR/2.5BA
Optional Garden Bath
Optional 1 Car or 2 Car Garage

Renderings and Plans are for marketing purposes only and may be shown with additional options including siding. This information is deemed accurate, but cannot be guaranteed. Consult Sales Contract and Option Schedule for actual options chosen. Builder reserves the right to make changes at any time.